



St. Mary's Hospital (Idaho)
701 Lewiston St | Cottonwood, ID 83522

Service Area (29,132 population)

 319 community survey responses

 14 partnering organizations

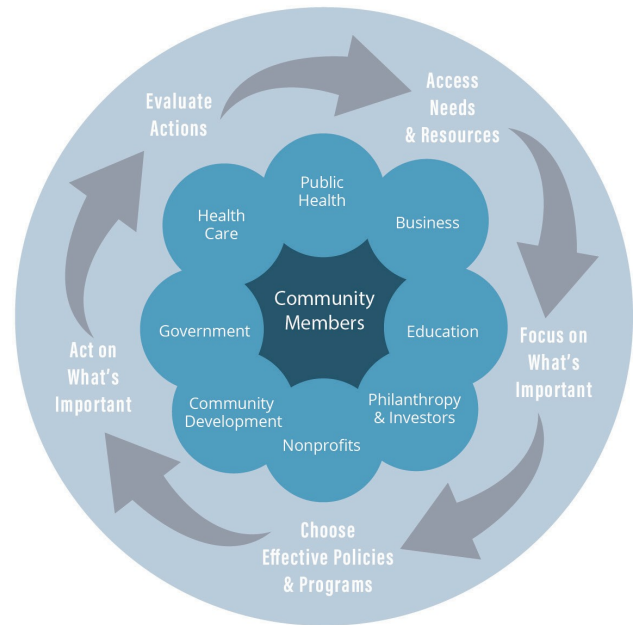
 3 priority health needs

GUIDING PRINCIPLES

1. Collaborate towards solutions with multiple stakeholders (e.g. schools, worksites, medical centers, public health) to improve community health.
2. Build trust through collaboration with community members experiencing health disparities.
3. Prioritize sustainable evidence-based efforts around the greatest community good.
4. Create clear, specific, realistic, and action-oriented goals to improve priority health indicators.

PROCESS

Work Together



Communicate

Children have quality care	Healthy in mind and spirit	Transportation
<p>Indicators: Low number of licensed day care providers No after-school program for pre-teens and teens High percentage of 2-parent working families</p> <p>Strategies: - Establish licensed day care facility in Cottonwood - Enhance existing after-school and summer programs</p>	<p>Indicators: 35% of high school students report depression symptoms 22% of high school students seriously considered attempting suicide</p> <p>Strategies: - Implement suicide prevention campaign - Implement student "mental wellness curriculum" - Establish "road to recovery" support program</p>	<p>Indicators: High number of elderly and disabled people who cannot drive No public transportation Rural, remote populations</p> <p>Strategies: - Explore purchasing own transportation - Explore creating "volunteer-based" system</p>