

Essentia Health-Ada

201 9th St W, Ada, MN 56510

Service Area Population: 6,520



86 individuals completed the survey



16 individuals participated in listening sessions



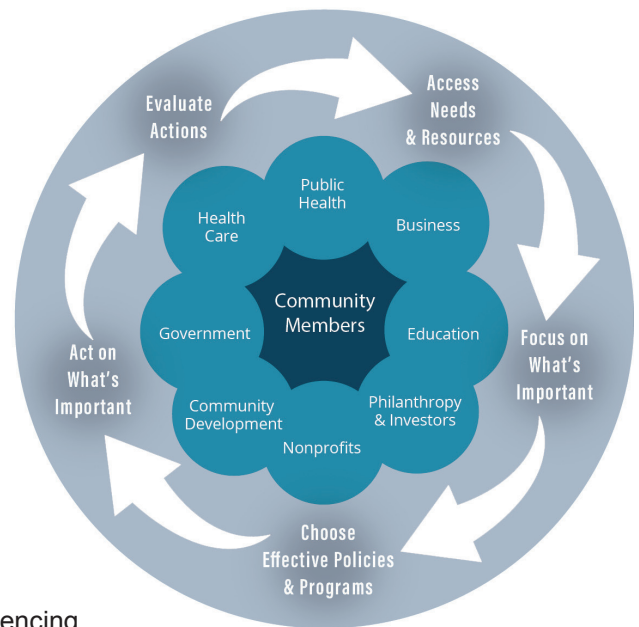
3 community listening sessions

GUIDING PRINCIPLES

1. Collaborate towards solutions with multiple stakeholders (e.g. schools, worksites, medical centers, public health) to improve community health.
2. Build trust through collaboration with community members experiencing health disparities.
3. Prioritize sustainable evidence-based efforts around the greatest community good.
4. Create clear, specific, realistic, and action-oriented goals to improve priority health indicators.
5. Prioritize strategies that advance health equity, address structural barriers, or reduce health disparities

PROCESS

Work Together



Communicate

Youth Mental Wellbeing

Build meaningful relationships between youth and adults by expanding mentorship program.

Increase participation in meaningful activities for youth.

Expand education and training to reduce the stigma of mental illness and increase access to resources using the "Be Well" Framework

Access to Economic Opportunities

Identify and implement opportunities for students to expand hands on experiences in the community through internships & apprenticeships.

Positive campaign to expand "Buy Local" to incentivize and raise awareness of the impact of local dollars.

