

Essentia Health - Fargo

3200 32nd Ave S, Fargo, ND 58103

Service Area Population: 121,889



1,088 people completed the survey



80 people participated in listening sessions



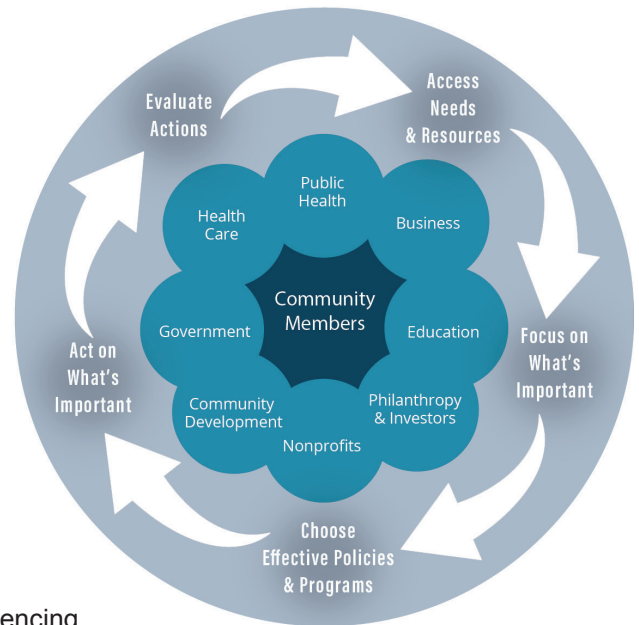
7 community listening sessions were held

GUIDING PRINCIPLES

1. Collaborate towards solutions with multiple stakeholders (e.g. schools, worksites, medical centers, public health) to improve community health.
2. Build trust through collaboration with community members experiencing health disparities.
3. Prioritize sustainable evidence-based efforts around the greatest community good.
4. Create clear, specific, realistic, and action-oriented goals to improve priority health indicators.
5. Prioritize strategies that advance health equity, address structural barriers, or reduce health disparities

PROCESS

Work Together



Communicate

Health Equity

Increase outreach in New American communities.

Increase education and training opportunities to support diversity, equity, and inclusion in the workplace.

Mobilize a career ladder/career leveling map to navigate employment opportunities throughout the system.

Develop a new multi-cultural childcare center in Moorhead.



Mental Health

Invest in and support school staff education and training with a focus on LBGTQIA2S+ and BIPOC student needs.

Utilize the Sources of Strength evidence-based curriculum with ALC students.

Implement programs and support activities that facilitate pro-social activities and aid in student's ability to build healthy relationships with trusted adults.

