




Essentia Health - Duluth
Essentia Health - St. Mary's Medical Center
 Service Area (Duluth) population: 85,617

 340 community members participated in a survey.

 128 people provided lived experience stories.

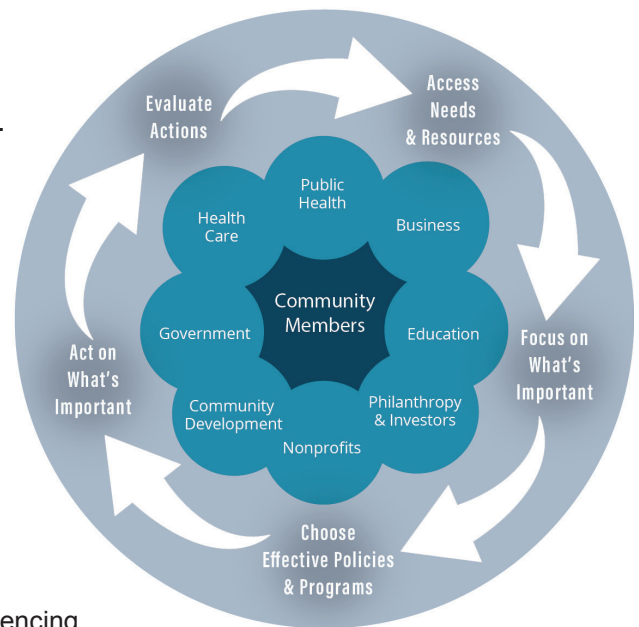
 41 organizations participated in the process.

GUIDING PRINCIPLES

1. Collaborate towards solutions with multiple stakeholders (e.g. schools, worksites, medical centers, public health) to improve community health.
2. Build trust through collaboration with community members experiencing health disparities.
3. Prioritize sustainable evidence-based efforts around the greatest community good.
4. Create clear, specific, realistic, and action-oriented goals to improve priority health indicators.
5. Prioritize strategies that advance health equity, address structural barriers, or reduce health disparities

PROCESS

Work Together



Communicate

Substance Use	Mental & Social Wellbeing	Food Access
<p>Engage the community to highlight solutions to support individuals, organizations, and communities impacted by substance use.</p> <p>Address stigma, increase advocacy, and develop connections to support recovery.</p> <p>Monitor opportunities for policy/advocacy.</p>	<p>Support neighborhood initiatives that foster connection and belonging.</p> <p>Increase awareness of existing community efforts, resources, and promising practices.</p>	<p>Participate in efforts to make nutritious and culturally appropriate food more affordable and accessible.</p> <p>Screen for food insecurity and connect people with resources.</p> <p>Support school-based food access programs.</p> <p>Support community-led partnerships.</p>

The full report can be found at EssentiaHealth.org/about/chna

For questions or comments, please contact chna.comments@essentiahealth.org



Essentia Health